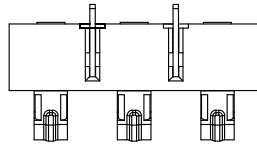


Rohs

REV.	DESCRIPTION	DRAW.	DATE.



PART NO.	DIM A	DIM B
AUGO-BC-17-3PD430C	2.4	4.30 ± 0.25
AUGO-BC-17-3PD540C	3.5	5.40 ± 0.25

Material:

Insulator : LCP(UL94V-0)

Contact : Phosphor Bronze

Contact Plated : Gold over Nickel or Tin

Specification:

Current Rating : 3A

Voltage Rating : 24V

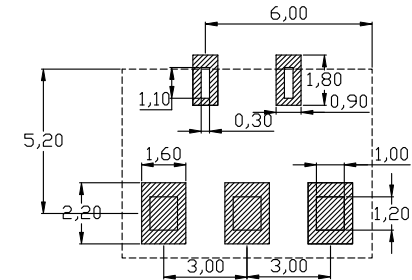
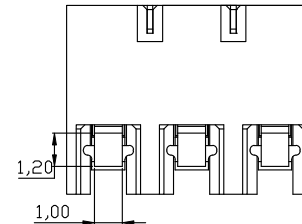
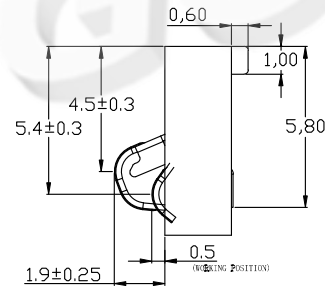
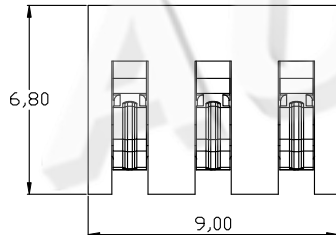
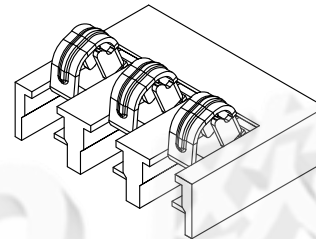
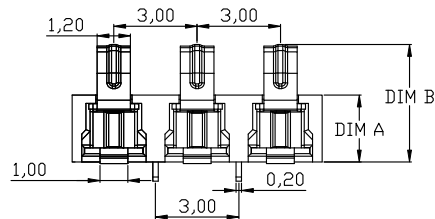
Contact Resistance : 30m Ω

Insulation Resistance : 500M Ω

Dielectric Voltage : 500V

Operating Temperature : -40°~85°

Electrical Life : 5000cycles



RECOMMENDED PCB LAYOUT  
TOP VIEW (. XX ± 0.05)

**AUGO**

AUGO ELECTRONICS CO.,LTD.

COPYRIGHT RESERVED, PLEASE DO NOT COPY.

REV:	01	UNLESS OTHERWISE SPECIFIED, TOLERANCE:	TITLE:	3.0 PITCH BATTERY CONNECTOR	DESIGN	G.C.CHEN	DATE	
SIZE:	A4				X.	±0.20	DRAWING	Y.C.ZHANG
SCALE: 1:1	UNIT: mm	X.x	±0.15	PART NO:	AUGO-BC-17-3PDC	CHECK	D.J.WANG	DATE
SHEET: 1/1		X.xx	±0.10			SCALE	1:1	PAGE
		ANGULAR	±2°					